

## Flute I

# Overture to TIME'S OFFSPRING

Aloys Fleischmann  
(1910-1992)

**Allegro moderato** (♩ = 96)

**A** *mf* 3

**B** 3 4

**C** *ff* *ff*

**D** *cresc.* *mf* *cresc.* 1

**E** *f* *f* a 2

**F** *f* *ff* *mf*

## Flute I

67 **Poco meno mosso** (♩ = 108)

3 2 Hn. *mp*

75 *mf* < *f*

81 *mp*

85 *mp* *mp*

89 *pp* **I** 6

97 **poco rilasciando** **Tempo primo** Ob. *p*

105 *mp* < *mf* **1**

111 **J** 4 *mf* *f*

118 3

124 **K** *f* 3 3 3

127 **L** *f* **1**

The musical score for Flute I spans measures 67 to 127. It begins with a tempo marking of 'Poco meno mosso' at 108 beats per minute. The score includes several rehearsal marks: G (measure 75), H (measure 81), I (measure 89), J (measure 111), K (measure 124), and L (measure 127). Dynamic markings include *mp* (mezzo-piano), *mf* (mezzo-forte), *f* (forte), *pp* (pianissimo), and *p* (piano). The score features various musical notations, including rests, notes, slurs, and articulation marks. A tempo change to 'Tempo primo' occurs at measure 97, accompanied by the instruction 'poco rilasciando'. The key signature changes from one flat to one sharp at measure 105. The score concludes with a final measure at 127.

131 *più f* **M**

136 *ff*

139 *ff*

143 **N** *f*

147 *ff* *molto rit.*

150 **O** *Moderato* *mf*

160 **P** *f*

164 **Q** *ff*


167 **R** *ff* *rall.*

174 **S** *mp*

# Overture to

Aloys Fleischmann  
(1910-1992)

**Allegro moderato** (♩ = 96) (1910-1992)



2

*mf*

[illegible]

26 **Presto** (♩ = 126)  
3

*mp* *mp*

33 *mp* *mp* 5

41 **D**

*cresc.* *mf* *cresc.* 1

47 Musical notation for measure 47. It begins with a treble clef and a key signature of one flat (B-flat). The measure contains a sequence of notes: a quarter rest, an eighth note G4, a quarter note F4, an eighth note E4, a quarter note D4, an eighth note C4, and a quarter note B3. A box labeled 'E' is placed above the eighth note E4. The measure ends with a double bar line. A dynamic marking 'f' is placed below the first eighth note G4.

Change to Picc.

## Flute II, Piccolo

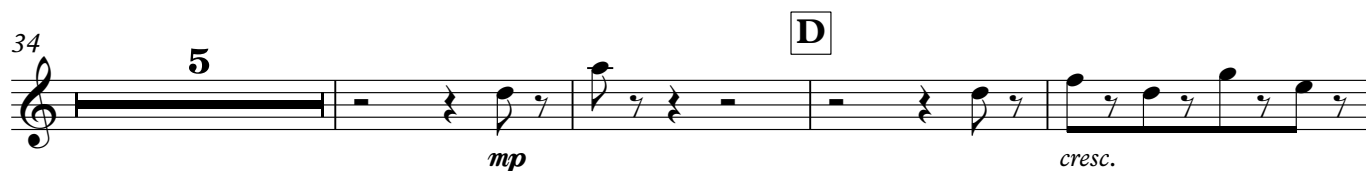
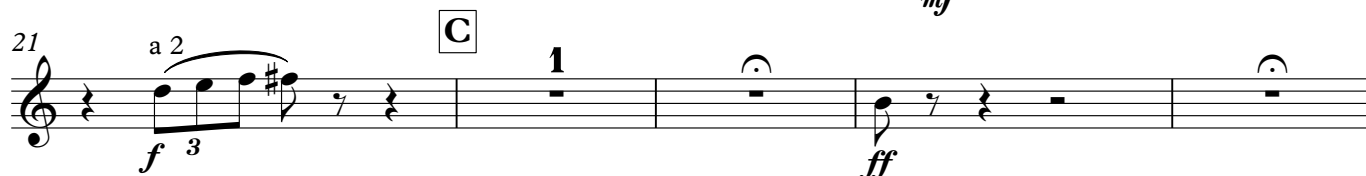
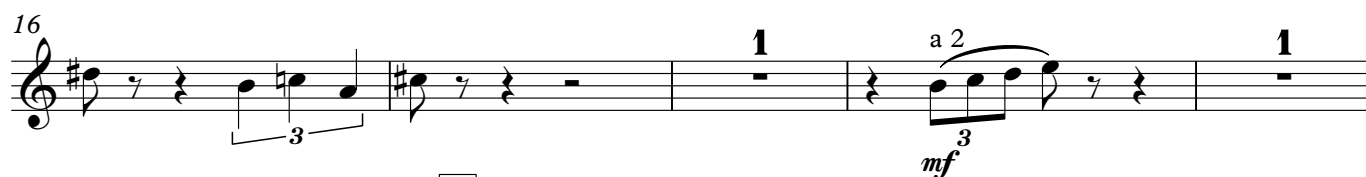
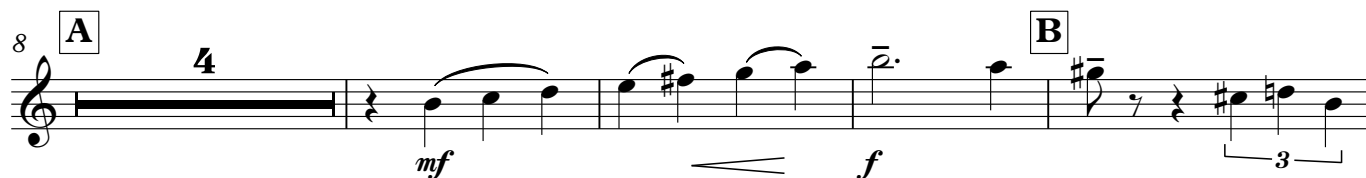
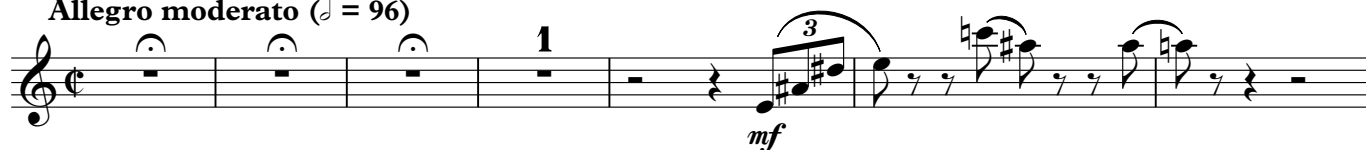
[illegible]

Oboe I

# Overture to TIME'S OFFSPRING

Aloys Fleischmann  
(1910-1992)

**Allegro moderato** (♩ = 96)



## Oboe I

67 **Poco meno mosso** (♩ = 108) Hn.

75 G *mp*

83 H *mf* < *f*

87 *mp* *pp*

91 I **poco rilasciando** **Tempo primo**  
Vc.

103 *mp* < *f*

111 J *mf* *f*

119 *f*

124 K *f*

127 L *f*

131 *più f*



Oboe I

3

135 **M**

138

142 **N**

146 *molto rit.*

150 **O** *Moderato*

160 **P**

164 **Q**

167 **R**

172 **S**

*ff*

*mf*

*pp*

*rall.*

1 2

## Oboe II

# Overture to TIME'S OFFSPRING

Aloys Fleischmann  
(1910-1992)

**Allegro moderato** (♩ = 96)

**A**

**B**

**C**

**Presto** (♩ = 126)

**D**

**E**

**F**

**Poco meno mosso** (♩ = 108)

[illegible]

Oboe II

3

134 **M**

*ff*

138

*ff*

142 **N**

*f*

146 **molto rit.**

*ff*

150 **Moderato** **O**

*mf*

160 **P**

*f*

164 **Q**

*ff*

167 **R**

*ff*

172 **S**

*pp*

Clarinet I in B $\flat$

# Overture to TIME'S OFFSPRING

Aloys Fleischmann  
(1910-1992)

**Allegro moderato** ( $\text{♩} = 96$ )

7 **A** *mf*

12 **B** *mf*

19 **C** *mf* *f* *ff*

26 **Presto** ( $\text{♩} = 126$ ) *mp* *mp*

37 *mp*

41 **D** *mf* *cresc.* *f*

47 **E** *f*

52 *a 2* *più f*

56 **F** *ff*

62 *f* *mf*

Clarinet I in B $\flat$ 

67 **Poco meno mosso** ( $\text{♩} = 108$ )

3 5 *mp*

77 **G** 3 *f*

84 **H** 6 **I** *pp* *p* *p*

95 **poco rilasciando** 1 *p*

100 **Tempo primo** 1 6 1 *p* *mf*

111 **J** 1 *mf* *mf*

116 2 *f*

122 **K** *f* 3 3 3

126

129 **L** *f* *più f*

Clarinet I in B $\flat$ 

134 *a 2* **M** *ff*

138 *ff* *3*

142 **N** *f*

146 *molto rit.* *ff*

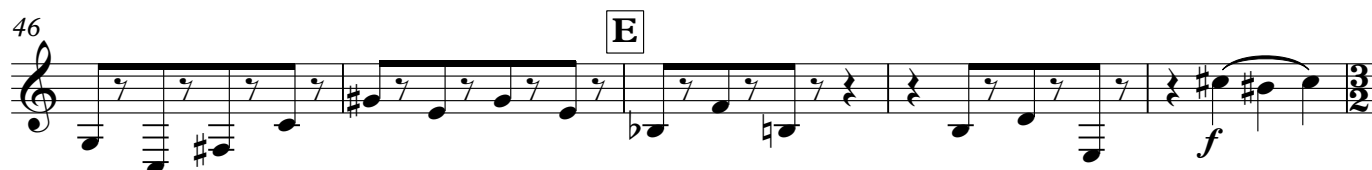
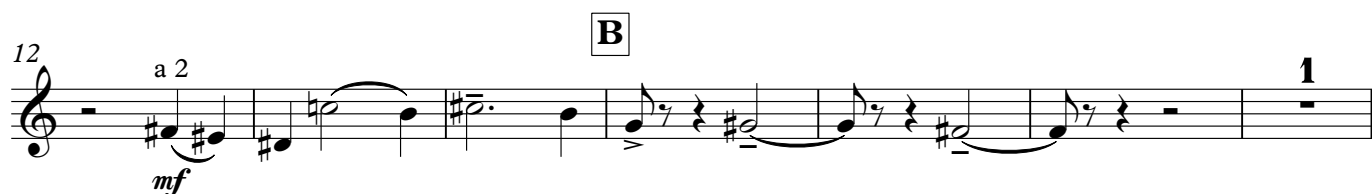
150 *Moderato* **O** *mf* *a 2*

160 **P** *f* *a 2*

164 **Q** *ff* *5* *5*

167 **R** *ff* *a 2*

172 **S** *pp* *rall.* *1* *2*

**TIME'S OFFSPRING**Aloys Fleischmann  
(1910-1992)**Allegro moderato** ( $\text{♩} = 96$ )



Clarinet II in B $\flat$ 

67 **Poco meno mosso** ( $\text{♩} = 108$ ) G

**3** **5** **3**

*mp*

80 H **6**

*f*

90 I

*pp* *p* *p*

97 **poco rilasciando** **Tempo primo** **4** **8** **1**

*mf*

111 J **1** **2**

*mf* *mf*

118 **f**

*f*

123 K **3** **3** **3**

*f*

126

*f*

129 L **f** **più f**

*f* *più f*

Clarinet II in B $\flat$ 

134 *a 2* **M** *ff*

138 *ff* *a 2* *3*

142 **N** *f*

146 *molto rit.* *ff*

150 **O** *Moderato* *mf* *a 2*

160 **P** *f* *a 2*

164 **Q** *ff* *5*

167 **R** *a 2* *ff*

172 **S** *pp* *rall.* *1* *2*

Bassoon I

Overture to  
**TIME'S OFFSPRING**

Aloys Fleischmann  
(1910-1992)

**Allegro moderato** (♩ = 96)

7 **A** 4 **B** 3

19 **C**

26 **Presto** (♩ = 126) 9 **D** 4

39 **E** 3 **F** 3

48 **F** 3

55 **F** 3

61 **F** 3

## Bassoon I

Poco meno mosso (♩ = 108)

65

*mf*

3

7

77 **G**

6

*mp*

**H**

4

91 **I**

4

*p*

97 poco rilasciando

1

*p* < > <

*pp*

101 **Tempo primo**

8

Cl.

*mf*

111 **J**

115

5

*f*

*f*

124 **K**

129 **L**

*f*

*più f*

3

## Bassoon I

133 M

*f* < *ff*

138

*f* < *ff*

143 N *molto rit.*

*ff* <sup>5</sup> *f*

148 *Moderato* *a 2* *mp*

*mp*

152 O *mp*

*mp*

157 P *cresc.* *f*

*cresc.* *f*

163 Q *f* *ff*

*f* *ff*

167 R *ff*

*ff*

172 S *rall.* *2* *2*

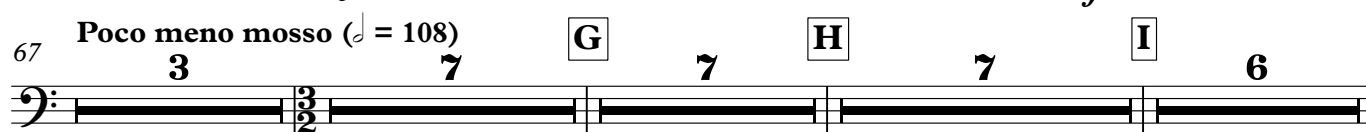
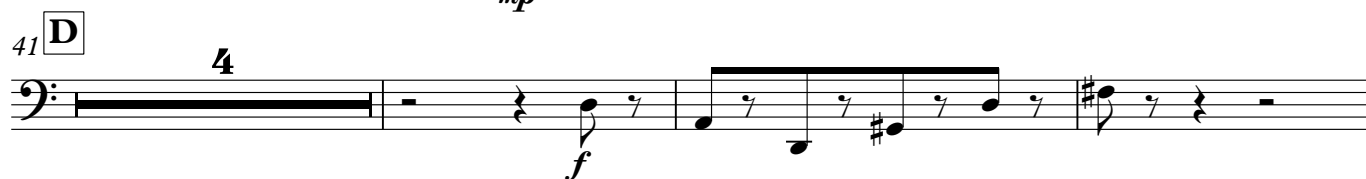
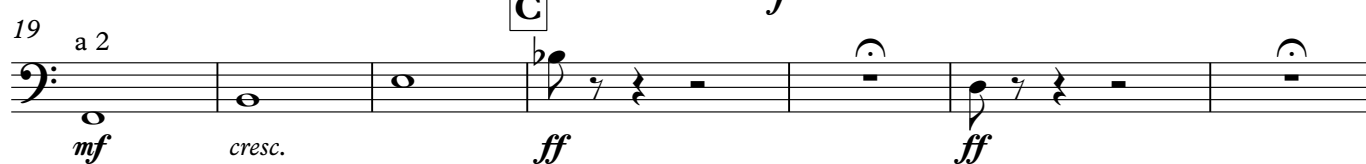
*rall.* *2* *2*

Bassoon II

Overture to  
**TIME'S OFFSPRING**

Aloys Fleischmann  
(1910-1992)

**Allegro moderato** (♩ = 96)



## Bassoon II

101 **Tempo primo** 8 Cl. **J** 8

120 **K**

126 **L**

131 *più f*

135 **M** *f* *ff*

140 **N** *ff* 5

145 *a 2* *molto rit.* *f*

150 **Moderato** *a 2* *mp* **O**

156 **P** 1 1 *cresc.* *f* *f*

164 **Q** 1 *ff* *ff* **R**

170 **S** 2 2 *rall.*

Horn I in F

# Overture to TIME'S OFFSPRING

Aloys Fleischmann  
(1910-1992)

**Allegro moderato** (♩ = 96)

8 **A** 3 Vln. 1 **B** a 2 *mf* *f*

16 2 *p* *poco cresc.*

22 **C** 1 **Presto** (♩ = 126) 15 *ff* *sfz p*

41 **D** 5 Vln. 1

48 **E** Vln. 1 *f* *f* 1

54 **F** *f* *ff* *f*

62 *mf* *>* 2 3 **Poco meno mosso** (♩ = 108) Vc. 1

72 *mp* 1

77 **G** 2 *mf* *<* *f* 1



## Horn I in F

84 **H** *mp* **I** **4** **6** **4** poco rilasciando

101 **J** **10** **9** *Tempo primo* Bsn.

123 **K** *mf* *f*

129 **L** **1** *più f*

135 **M** **1** *a 2* *a 2*

141 **N** **1** **1** **2** *a 2* *molto rit.* *ff*

148 *Moderato* *mp*

153 **O** *mp* *cresc.*

159 **P** *f*

164 **Q** *ff* *f*

168 **R** **S** **2** **2** *rall.*

Horn III in F

# Overture to TIME'S OFFSPRING

Aloys Fleischmann  
(1910-1992)

**Allegro moderato** (♩ = 96)

8 **A** 3 Vln. 1 **B** a 2 *mf* *f*

16 2 *p* *poco cresc.*

22 **C** 1 **Presto** (♩ = 126) 15 *ff* *sfz p*

41 **D** 5 Vln. 1 **E** Vln. 1 *f*

50 **F** 1 *f* *f* *ff*

57 *f*

62 **Poco meno mosso** (♩ = 108) 2 3 2 *mf*

72 Hn. I 1

77 **G** 2 1 *mf* *f*

## Horn III in F

84 **H** **I** **poco rilasciando**

*mp* **4** **6** **4**

101 **Tempo primo** **J** **10** **9** Bsn.

123 **K** *mf* *f*

129 **L** **1** *più f*

135 **M** **1** *f* *ff* *a 2* *a 2*

141 **N** **1** **1** **2** *a 2* **molto rit.** *ff*

148 **Moderato**

154 **O** *mp* *cresc.*

159 **P** *f*

164 **Q** *ff* *f*

168 **R** **S** **2** **2** *rall.*

## Horn II in F

Overture to  
**TIME'S OFFSPRING**Aloys Fleischmann  
(1910-1992)**Allegro moderato** (♩ = 96)

8 **A** 3 *f* *mf* *f* *a 2* **B**

16 2 *p* *poco cresc.*

22 **C** *ff* *ff* **Presto** (♩ = 126) 15

41 **D** 5 *Vln. 1* **E** *f*

50 1 *f* *f*

56 **F** *ff* *f*

62 **Poco meno mosso** (♩ = 108) 2 3 2 *mf*

72 5 **G** 2 1 *mf < f*

84 **H** 7 **I** 6 *poco rilasciando* 4

## Horn II in F

101 **Tempo primo** **J** 10 9 Bsn. -

123 **K** 1 *f*

129 **L** 1 *pù f*

135 **M** a 2 *f* *ff* a 2 a 2

141 **N** 1 1 2 a 2 *molto rit.* *ff*

148 **Moderato** *mp*

153 **O** *mp*

159 **P** *f*

164 **Q** *ff* a 2 *f*

168 **R** *ff* **S** 2 2 *rall.*

Horn IV in F

# Overture to TIME'S OFFSPRING

Aloys Fleischmann  
(1910-1992)

**Allegro moderato** (♩ = 96)

8 **A** 3 *f* *mf* *f* *a 2* **B**

16 2 *p* *poco cresc.*

22 **C** *ff* *ff* **Presto** (♩ = 126) 15

41 **D** 5 *Vln. 1* **E** *f*

49 1 *f*

54 **F** *f* *ff* *f* **Poco meno mosso** (♩ = 108) 2 3 2

62 *mf*

72 5 **G** 2 *mf* *f* 1

84 **H** 7 **I** 6 *poco rilasciando* 4

## Horn IV in F

101 **Tempo primo** **J** 10 9 Bsn. -

123 **K** 1 *f*

129 **L** 1 *p* *più f*

135 **M** a 2 *f* *ff* a 2 a 2

141 **N** 1 1 2 a 2 *molto rit.* *ff*

148 **O** *Moderato* *mp*

153 **P** *f*

159 **Q** *ff* a 2 *f*

164 **R** *ff* **S** 2 *rall.* 2

Trumpet I in B $\flat$

# Overture to TIME'S OFFSPRING

Aloys Fleischmann  
(1910-1992)

**Allegro moderato** ( $\text{♩} = 96$ )

**A** **3** **f** **Vln. 1** **mf** **f**

**B** **2** **p** **poco cresc.**

**C** **1** **Presto** ( $\text{♩} = 126$ ) **15** **ff**

**D** **5** **Vln. 1** **E** **f**

**F** **1** **f** **ff**

**F** **4**

**G** **3** **7** **2** **Hn.**

**H** **1** **mp**

**I** **4** **6**

**poco rilasciando** **4** **Tempo primo** **10**



Trumpet I in B $\flat$ 

111 **J** 9 Bsn. *mp* *mf*

124 **K** *f* 2

129 **L** *f* 1 *più f*

134 **M** *ff*

139 *a 2* 1

144 **N** 1 2 *molto rit.* *ff*

150 **O** *Moderato* *a 2* *mp* *cresc.*

155 **P** *f*

164 **Q** *ff* *ff*

169 **R** **S** 2 *rall.* 2

## Overture to

Aloys Fleischmann  
(1910-1992)

Violin 1 score, measures 1-91. The score is in C major, 4/4 time. It features various dynamics (f, mf, p, ff, poco cresc., poco rilasciando) and tempo changes (Presto, Poco meno mosso, Tempo primo). The score includes measures 1-91, with measures 1-15, 22-41, 49-53, 58-67, 82-91, and 91-100. The score is divided into sections A, B, C, D, E, F, G, H, and I. The score includes measures 1-91, with measures 1-15, 22-41, 49-53, 58-67, 82-91, and 91-100. The score is divided into sections A, B, C, D, E, F, G, H, and I. The score includes measures 1-91, with measures 1-15, 22-41, 49-53, 58-67, 82-91, and 91-100. The score is divided into sections A, B, C, D, E, F, G, H, and I.

Trumpet II in B $\flat$ 

111 **J** 9 Bsn. *mp* *mf*

124 **K** *f* 2

129 **L** *f* *più f* 1

134 **M** *ff*

139 a 2 1

144 **N** 1 2 *molto rit.* *ff*

150 **O** *Moderato* a 2 *mp* *cresc.*

155 **P** *f*

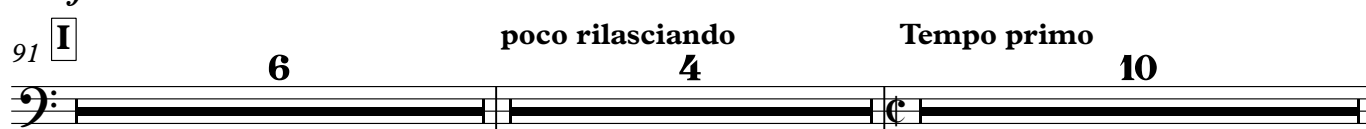
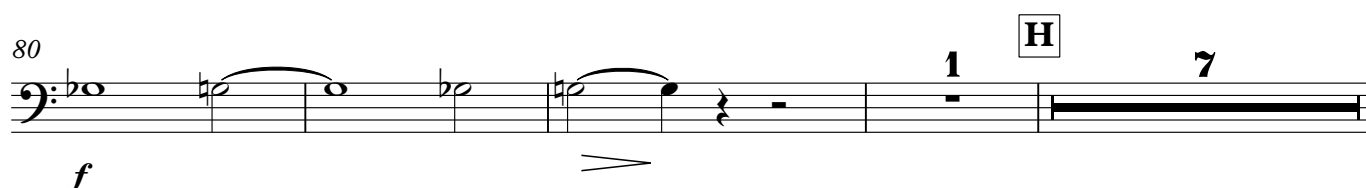
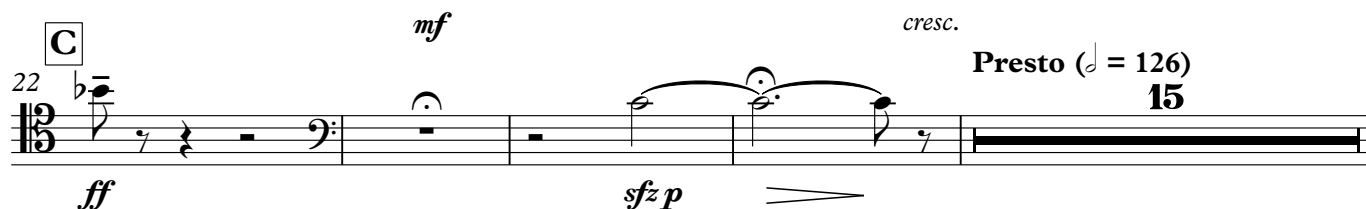
164 **Q** *ff* *ff*

169 **R** **S** 2 *rall.* 2

## Trombone I

## Overture to

## TIME'S OFFSPRING

Aloys Fleischmann  
(1910-1992)**Allegro moderato** (♩ = 96)

111 **J** 9 Bsn. *mf*

124 **K** 1 1 2

129 **L** *f* *più f*

134 **M** *f* *ff*

139 1

144 **N** 1 2 *molto rit.* *ff*

150 **O** *Moderato* *mp* *Solo*

155 *mp* *Solo* *cresc.*

159 **P** *f* 1

164 **Q** *ff* *ff* *a 2*

169 **R** *rall.* **S** 2 2

## Trombone II

# Overture to TIME'S OFFSPRING

Aloys Fleischmann  
(1910-1992)

**Allegro moderato** (♩ = 96)

a 2

**f**

8 **A** 3

Vln. 1

**mf** **f**

15 **B** 2

a 2

**mf** **cresc.**

22 **C** 15

**Presto** (♩ = 126)

**ff** **sfz p**

41 **D** 7 **E** 3 2

Tpt.

55 **F**

**ff**

58 6

67 **Poco meno mosso** (♩ = 108)

3 7 **G** Vln. 1

80 1 **H** 7

**f**

91 **I** 6 **poco rilasciando** 4 **Tempo primo** 10

## Trombone II

111 **J** 9 Bsn. *mf*

124 **K** 1 1 2

129 **L** *f* *più f* 1

134 **M** *f* *ff*

139 1

144 **N** 1 2 *molto rit.* *ff*

150 **O** *mp* *cresc.*

155 **P** 1 *f* *ff*

160 **Q** *ff*

166 **R** 1 2 *ff*

170 **S** 2 *rall.* 2

## Trombone III

## Overture to

## TIME'S OFFSPRING

Aloys Fleischmann  
(1910-1992)

**Allegro moderato** ( $\text{♩} = 96$ )

*f*

**A**

*mf* *f*

**B**

*mf* *cresc.*

**C**

**Presto** ( $\text{♩} = 126$ )

*ff*

**D** **E**

**F**

*ff*

**G** *Vln. 1*

**H**

*f* *p*

**I**

*poco rilasciando* **Tempo primo**



## Trombone III

111 **J** 9 Bsn. B. Trbn. *mf*

124 **K** 1 1 2

129 **L** 1 *f* *più f*

134 **M** *f* *ff*

139 1

144 **N** 1 2 a 2 *molto rit.* *ff*

150 **O** *Moderato* *mp* *cresc.*

155 **P** *f* **Q** 2 *ff*

166 **R** 2 B. Trbn.

171 **S** 2 *rall.* 2

## Tuba

# Overture to TIME'S OFFSPRING

Aloys Fleischmann  
(1910-1992)

**Allegro moderato** (♩ = 96)

8 **A** **f** **3**

15 **B** **mf** **cresc.** **f** **3** **a 2**

22 **C** **ff** **1** **15** **Presto** (♩ = 126)

41 **D** **7** **E** **3** **2** **Tpt.**

55 **F** **ff**

58 **7**

67 **G** **Poco meno mosso** (♩ = 108) **3** **7** **Vln. 1**

80 **H** **7** **f** **p**

91 **I** **6** **poco rilasciando** **4** **Tempo primo** **10**

## Tuba

111 **J** 9 Bsn. B. Trbn.

124 **K** 1 1 2

129 **L** 1 *f* *più f*

134 **M** 1 *ff*

139 1

144 **N** 1 2 *molto rit.* *a 2* *ff*

150 **Moderato** *mp*

155 **O** *mp* *cresc.*

159 1 **P** 2 *f*

164 **Q** 3 *ff*

169 **R** **S** 2 *rall.* 2

Timpani

Overture to

# TIME'S OFFSPRING

**Allegro moderato** (♩ = 96)

Aloys Fleischmann  
(1910-1992)

Percussion

Timpani in Ab, C, E

8 **A**

15 **B**

Change C to D

22 **C**

Change Ab to G, D to A, E to D

**Presto** (♩ = 126)

41 **D**

**E**

56 **F**

Change G to F

67 **G**

**Poco meno mosso** (♩ = 108)

84 **H**

**I**

**poco rilasciando**

## Timpani

101 **Tempo primo** **J** 10 9 Bsn.

123 **K** Change D to F' 2

129 **L** Change F to G#, A to D, F' to E 1 3

135 **M** Change G to Ab, A to D, D to E 2 2 2 2

144 **N** 1 2 **molto rit.** ff

150 **Moderato** Change Ab to G, D to Ab, E to D **O** 4 5

160 **P** 1 Hn. f

164 **Q** Change Ab to G 3

169 **R** ff 1

174 **S** 2 **rall.** 2

Overture to

# TIME'S OFFSPRING

Aloys Fleischmann  
(1910-1992)

**Allegro moderato** (♩ = 96) Tam-tam

Tam-tam

Bass Drum

*f*

3

3

8 **A** 4 Vln. 1 Tp. **B** Cymbals (with Tp. stick) *f*

T-t.

B. D.

4

4

*f*

16 2 Vln. 1 Ob. I **C** Xylophone *ff*

Cym.

B. D.

2

2

*mf* *cresc.* *ff*

23 **Presto** (♩ = 126) 11 11

Xyl.

B. D.

11

11

37 Cl.

Xyl.

B. D.

*mp*

41 **D**

Xyl.

B. D.

*cresc.*  
Cymbals  
*tr*

*pp*

*mf*

*f*

*cresc. poco a poco*

46 **E**

Xyl.

Cym.

*(tr)*

*f*

*sempre f*

51 **F**

Xyl.

Cym.

**3**

**6**

**3**

**6**

Vc.

63

Xyl.

Cym.

*mf*

67 **Poco meno mosso** (♩ = 108)

Xyl.

Cym.

**3**

**5**

**3**

**5**

Cl.

77 **G** Vibraphone

Xyl. *mp* *mf* *f* *ff* 2

Cym. 2

84 **H** Glockenspiel

Vib. *mf* 3 *mp* *pp*

Cym. 3

91 **I** poco rilasciando Tempo primo

Glock. 6 4 7 Vln. 1

Cym. 6 4 7

110 **J** Xylophone

Glock. 3 *mf* *f*

Cym. 3

117

Xyl.

Cym.

121

Xyl. *cresc.*

Cym.



124 **K**

Xyl. **2**

Cym. **2**

129 **L**

Ob.

Bass Drum

*f*

Snare Drum

*f*

134 **M**

B. D.

S. D.

(loosen snares)

*ff*

3

Cymbals (with Tp. stick)

139

Cym. *ff*

S. D.

*ff*

3

3

144 **N**

Bass Drum

*ff*

**2**

*molto rit.*

Cymbals *tr*

*p cresc. poco a poco*

*ff*

**2**

150 **Moderato**

B. D.

Cym.

*mp*

155 **O**

B. D.

Cym.

*mp*

**3**

**P**

**4**

**3**

**4**

164 **Q**

B. D.

Cym.

*ff*

Snare Drum

*f*

*ff*

169 **R**

B. D.

S. D.

*ff*

174 **S**

B. D.

S. D.

Vibraphone

*mp*

rall. . . . .

## Violin I

# Overture to TIME'S OFFSPRING

Aloys Fleischmann  
(1910-1992)

**Allegro moderato** (♩ = 96)

**A**

**11** *pizz.* *mf* *arco div.* *mf*

**17** *unis.* *f* *div.* *>* *3* *3*

**26** **Presto** (♩ = 126) *1* *pizz.* *mp*

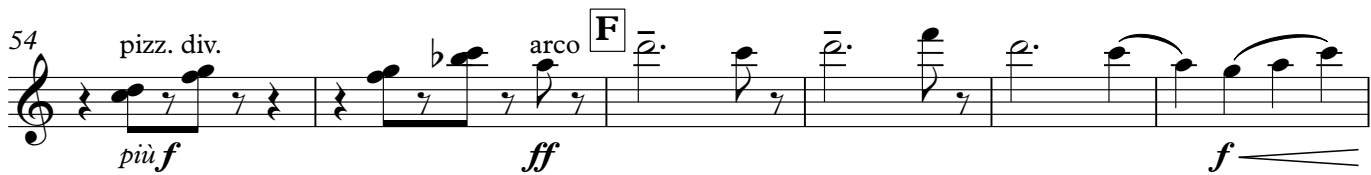
**31** *arco div.* *mp* *pizz.* *mp* *arco*

**37** *poco a poco cresc.*

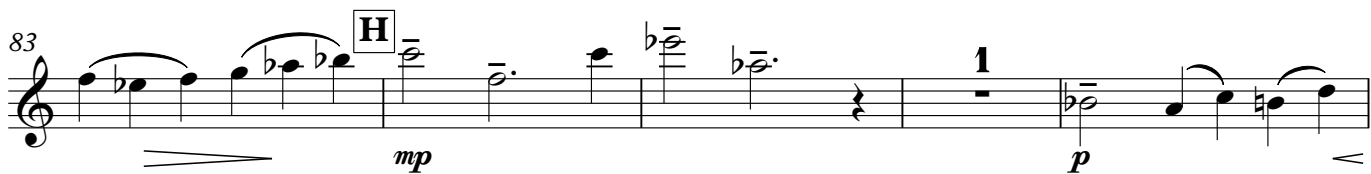
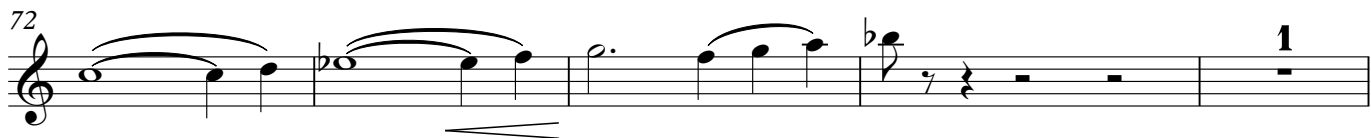
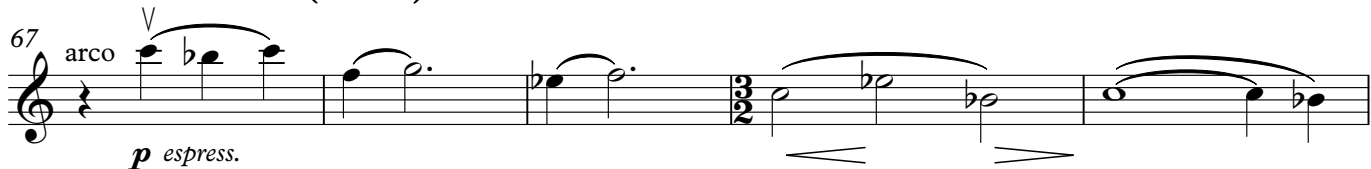
**41** **D** *mf* *cresc.*

**45** **E** *f* *1*

## Violin I



**Poco meno mosso** (♩ = 108)



## Violin I

97 **poco rilasciando** **Tempo primo**

4 1 pizz. *p*

105 arco div. *mp* *mf* pizz.

110 **J** arco *mf* *cresc.*

115 *f*

119

123 **K** 1 *f*

129 **L** *più f*

133 **M** 3 3 div. *ff*

138 8 8

## Violin I

142 **2** **N** *sonore* *f*

146 *molto rit.* *ff*

150 **Moderato** **1** *8va* *mp*

154 **O** *mp* *cresc.*

159 **P** *f*

164 **Q** *ff* *f* *ff*

168 **R**

174 **S** *rall.* *pp* *ppp*

## Violin II

Overture to  
**TIME'S OFFSPRING**Aloys Fleischmann  
(1910-1992)

**Allegro moderato** ( $\text{♩} = 96$ )

11 *pizz.* *mf* *arco div.* *mf* **A**

17 *unis.* *f* **B**

26 *pizz.* *mp* *arco* *mp* **C**

31 *poco a poco cresc.*

36 *poco a poco cresc.*

41 *mf* *cresc.* **D**

45 *f* **E**





## Violin II

poco rilasciando Tempo primo

97 **4** **1** pizz. arco

106 *poco cresc.*

110 **J**

114 *cresc.* **f**

118

122 **K** **1** **f**

127 **L**

132 *più f* div. **M** unis. **3**

137 *ff* div. unis.

## Violin II

142 **2** **N** div. sonore *f*

146 *molto rit.* *ff*

150 **Moderato** **1** *mp*

154 **O** *mp* *cresc.*

159 **P** div. *f* unis. div.

164 **Q** *ff* *f*

167 **R** *ff*

172 **S** *pp* *rall.* *ppp*

## Viola

# Overture to TIME'S OFFSPRING

Aloys Fleischmann  
(1910-1992)

**Allegro moderato** (♩ = 96)

3 pizz. **A** **1**

*mf*

11 arco *mf* *f* **B**

17 *mf* *ff* **C** **1**

**Presto** (♩ = 126)

26 *mp* **1**

32

36 pizz. div. arco *poco a poco cresc.*

41 **D** *mf* *cresc.*

45 **E** **1** *f*

## Viola

50 *f* pizz. div.

54 *pizz. più f* arco **F** *ff* *f*

60 *pizz. mf* arco *sfz p*

67 **Poco meno mosso** (♩ = 108) *mp*

72 *1*

77 **G** *p* *mp* *mf* *f*

83 **H** *mp* *p*

88 *mp* pizz.

91 **I** arco div. *p* *1*

## Viola

97 **poco rilasciando Tempo primo**

106



110



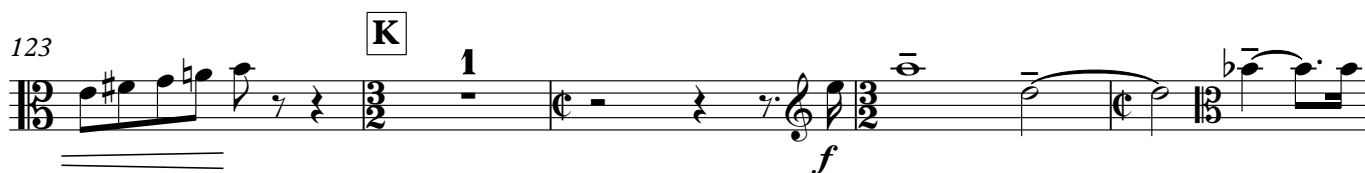
115



119



123



128



132



137



## Viola

142 **2** **N** *sonore*  
*f*

147 *molto rit.*  
*ff*

150 **Moderato**  
**1**  
*mp*

154 **O**  
*mp* *cresc.*

159 **P**  
*f*

164 **Q**  
*ff* *div.* *f*

167 **R**  
*ff*

172 **S** *rall.*  
*pp* *ppp*

## Violoncello

# Overture to TIME'S OFFSPRING

Aloys Fleischmann  
(1910-1992)

**Allegro moderato** (♩ = 96)

3 pizz. **A** *mf* arco *mf* <

12 **B** *f*

18 **C** *cresc.* *ff* *ff*

26 **Presto** (♩ = 126) *mp*

31 arco div. *mp*

37 arco **D** *poco a poco cresc.*

42 *mf* *cresc.*

46 **E** 1

## Violoncello

50 *f* pizz. div.

54 arco **F** *ff*

59 *f* pizz. div. *f*

65 arco **Poco meno mosso** (♩ = 108) *mf* *sfz p* *mp*

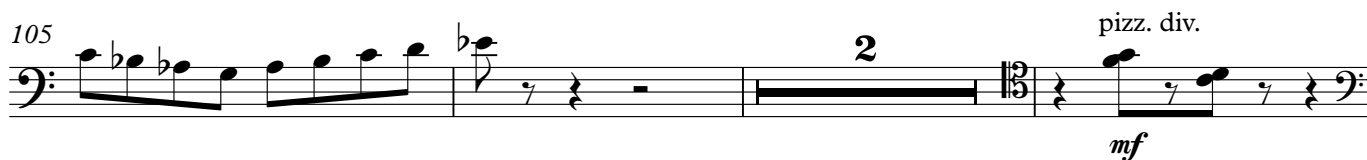
72

77 **G** *p* *cresc.* *f* *f*

83 **H** **I** *mp*

95 *poco rilasciando*



101 **Tempo primo**

171

*Handwritten musical notation for the bass line of 'The Rose Tree'. The notation is on a single staff with a bass clef. It begins with a treble clef and a key signature of one sharp (F#). The melody starts with a quarter note G4, followed by a quarter rest, then a half note A4. This is followed by a quarter note B4, a quarter rest, and a half note C5. The melody then continues with a half note D5, a half note E5, and a half note F#5. The piece concludes with a double bar line.*

Contrabass

# Overture to TIME'S OFFSPRING

Aloys Fleischmann  
(1910-1992)

**Allegro moderato** (♩ = 96)

**A** 4 4 **B**

*mf* *f*

16 **C** 2 *mf* *cresc.* *ff* *ff*

**Presto** (♩ = 126)

26 **D** 11 *mp* *pizz.* 1 1

42 **E** 6 3 *arco* *f*

53 **F** 2 *ff*

59 *pizz.* 3

65 **Poco meno mosso** (♩ = 108) *arco* *sfz p*

72 **G** 3 *p* *cresc.*

80 **H** 7 **I** 6 *poco rilasciando* 4

*f* *p*

101 **Tempo primo** **J** 10 1 *pizz.* *mf*

## Contrabass

115 **8** arco **K** *mf* *f*

129 **L** *più f* **3**

133 **M** **3** *ff*

138 **1**

142 **2** **N** *sonore* *f*

147 *molto rit.* *ff* *Moderato* *mp*

152 **O**

157 *cresc.* **P** *f*

162 **1** *f* *ff* *ff*

169 **R** **S** **2** **2** *rall.*